



3 Glovers Field, Hindhead Road, Haslemere, Surrey GU27 1LN
Freehold

CLARKE  GAMMON

3 GLOVERS FIELD HINDHEAD ROAD HASLEMERE SURREY GU27 1LN

Superbly presented semi-detached house

3 double bedrooms

Modern refitted bathroom & kitchen

Utility room & cloakroom

Double glazing and gas central heating

Large south facing garden with far reaching views

Small cul-de-sac

Walking distance of shops, schools & station.

Close to amenities

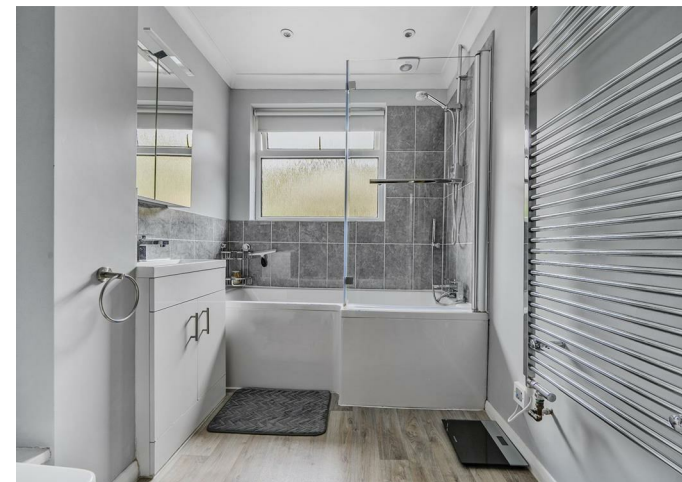


A superbly presented and spacious 3 bedroom modern semi-detached house in a small cul-de-sac within walking distance of schools, shops, amenities and Haslemere station.

THE PROPERTY

This close of just 4 homes was built in the early 1970's and enjoys a convenient location, whilst having a good size south facing rear garden with far reaching views and driveway parking. The current owners have modernised and improved the house to an excellent standard and is perfect for a family who want a smart, modern home without the aggravation of needing to do expensive and time consuming work.

On the ground floor is a useful entrance lobby, this leads into the reception hall which is big enough for a desk area, with stairs leading to the first floor. Off the hall is a well equipped utility room previously part of the garage and a cloakroom. The kitchen was refitted in 2019 with a comprehensive range of sleek contemporary style light grey units, with integrated appliances and a handy side door giving access to the side path. The light and deceptively spacious living/dining room is located at the rear of the house and enjoys an outlook onto the south facing rear garden via the double glazed doors. On the first floor are 3 double bedrooms, a particular benefit of this house design, serviced by a smart modern bathroom.



THE GROUNDS

The property is approached by a brick paved driveway, with parking for at least 2 cars leading to the paved entrance area. The gated side path with a hose tap leads to the rear garden, which is very well maintained with a sun deck, paved terrace, raised flower and shrub borders with a good sized lawn leading to the garden shed.

SITUATION

Hindhead lies on the Surrey/Hampshire border surrounded by many acres of countryside much of it National Trust owned including Hindhead Common and the Devil's Punchbowl, and is within easy reach of Farnham, Haslemere and Guildford. The local BP petrol station has an M & S convenience store and there is a small parade of shops. Nearby Weyhill has a range of shops including M & S Food and Tesco and Haslemere Town Centre provides a more comprehensive range including Waitrose, W H Smith, Boots and Costa. The village of Grayshott also lies close by where there is a variety of shops, restaurants, public house, Applegarth farm shop and restaurant and the widely renowned Grayshott Pottery. Haslemere main line station offers a fast and frequent service into London Waterloo from 49 minutes and the A3 can be accessed at the Hindhead Tunnel giving connections to the M25, Heathrow and Gatwick airports and the south coast. There are excellent private and state schools for all ages within easy reach.

Woolmer Hill School 1 mile
 Shottermill School 0.6 miles
 Shops, schools and amenities in Weyhill 0.6 miles
 Main line station 0.8 miles
 A3 access at Hindhead 2.5 miles
 Guildford 16 miles

All distances approximate



Glovers Field, Hindhead Road, Haslemere, GU27

Approximate Area = 1101 sq ft / 102.2 sq m

Garage = 54 sq ft / 5 sq m

Total = 1155 sq ft / 107.2 sq m

For identification only - Not to scale



Floor plan produced in accordance with RICS Property Measurement 2nd Edition, Incorporating International Property Measurement Standards (IPMS2 Residential). © n°chem 2025. Produced for Clarke Gammon. REF: 1255563

LOCAL AUTHORITY

Waverley

COUNCIL TAX

Band D

SERVICES

Mains water, electricity, mains drainage
gas central heating

8th May 2025

Energy Efficiency Rating

	Current	Potential
Very energy efficient - lower running costs		
(92 plus) A		
(81-91) B		81
(69-80) C		
(55-68) D	62	
(39-54) E		
(21-38) F		
(1-20) G		
Not energy efficient - higher running costs		
England & Wales	EU Directive 2002/91/EC	

CG HASLEMERE OFFICE

72 HIGH STREET, HASLEMERE, SURREY, GU27 2LA

T: 01428 664800

E: haslemere.sales@clarkegammon.co.uk

clarkegammon.co.uk

AGENT'S NOTE

Whilst we endeavour to make our sales particulars accurate and reliable, we wish to inform prospective purchasers that we have not carried out a detailed survey, nor tested the services, appliances and specific fittings. If there is any point which you would like to have further clarification upon, please contact this office.

ESTATE AGENTS CHARTERED SURVEYORS VALUERS LETTINGS AUCTIONEERS

GUILDFORD OFFICE
T: 01483 880 900

HASLEMERE OFFICE
T: 01428 664 800

LIPHOOK OFFICE
T: 01428 728 900

MAYFAIR OFFICE
T: 0870 112 7099

AUCTION ROOMS
T: 01483 223101

