



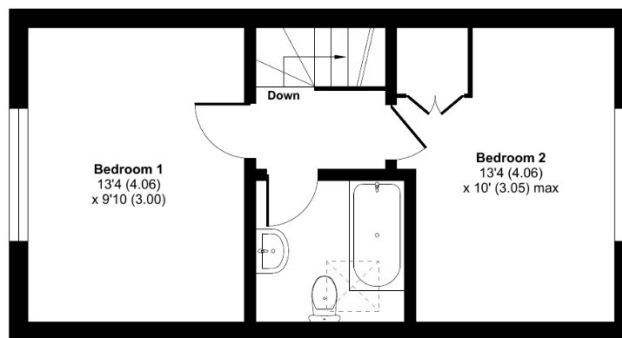
Three New Houses, 16 Tower Close, Liphook GU30 7AS



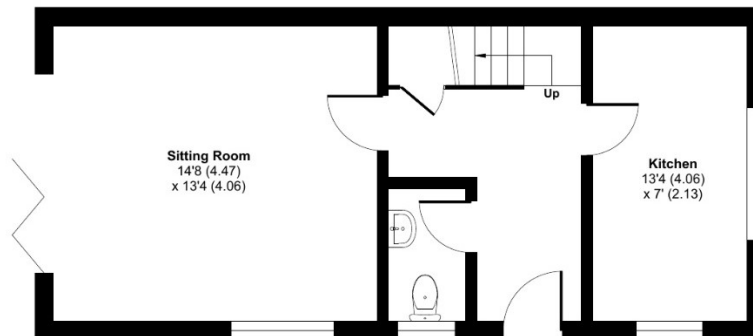
Plot 1, Tower Close, Liphook, GU30

Approximate Area = 777 sq ft / 72.1 sq m

For identification only - Not to scale



FIRST FLOOR



GROUND FLOOR



Floor plan produced in accordance with RICS Property Measurement Standards incorporating International Property Measurement Standards (IPMS2 Residential). © ncthemcom 2023. Produced for Clarke Gammon. REF: 954017

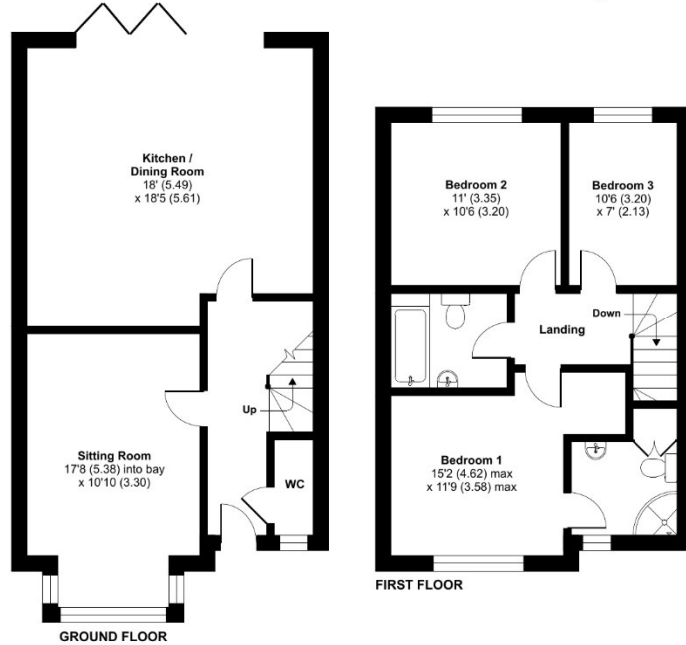
Plot 1, Two Bedrooms, End Terrace - £395,000



Plot 2, Tower Close, Liphook, GU30

Approximate Area = 1130 sq ft / 104.9 sq m

For identification only - Not to scale



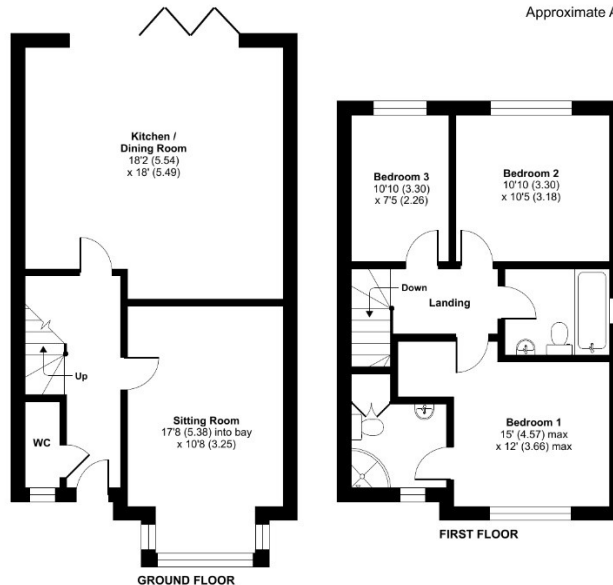
Floor plan produced in accordance with RICS Property Measurement Standards incorporating International Property Measurement Standards (IPMS2 Residential). © nitchecom 2023. Produced for Clarke Gammon. REF: 954021

Plot 2, Three Bedrooms, Mid Terrace - £475,000

Plot 3, Tower Close, Liphook, GU30

Approximate Area = 1130 sq ft / 104.9 sq m

For identification only - Not to scale



Floor plan produced in accordance with RICS Property Measurement Standards incorporating International Property Measurement Standards (IPMS2 Residential). © nitchecom 2023. Produced for Clarke Gammon. REF: 954027

Plot 3, Three Bedrooms, End Terrace - £495,000

Call Clarke Gammon Liphook, 01428 728 900 for further details