



STREET ELEVATION - NORTH - Plots 1 & 4



STREET ELEVATION - EAST - Plots 3 & 4



STREET ELEVATION - WEST - Plots 1 & 2



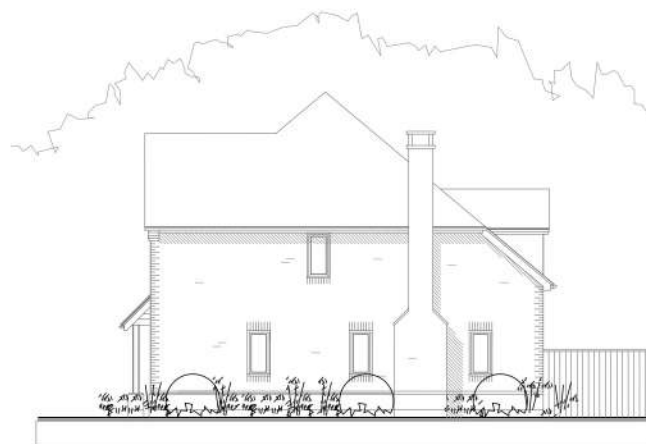
FRONT ELEVATION - West
PLOT 1



SIDE ELEVATION - North



REAR ELEVATION - East



SIDE ELEVATION - South

MATERIALS SCHEDULE

Roof:

Plain tile roofs, all roofs set at 40 degrees. Matching ridge & hip tiles. Lead cheeks to dormers. Painted support posts with stop and chamfered corners on brick plinths.

Walls:

First work set between single course red corbels & quoins to front & one side elevation first floor, remaining elevations in Red-mull facing brickwork. Projecting plinth to front & part side elevations, remaining elevations to have single red flush plinth course. Red cut brick soldier course below window cill.

Windows:

Traditional 'Light Grey' pre-finished double glazed cottage bar casement windows. All Bathrooms, Shower Rooms & H.C.'s to have obscured glazing.

Double Doors:

Double glazed doors / sliding folding doors.

Front Doors:

Oak finished vertically boarded with glazed light.

Rainwater Goods:

Black spvc half round guttering with matching downpipes.

MATERIALS SCHEDULE

- Roof:**
Plain tile roofs, all roofs set at 40 degrees. Matching ridge & hip tiles. Lead cheeks to dormers. Panted support posts with stop and chamfered corners on brick plinths.
- Walls:**
Facing brickwork to ground & part first floor, projecting plinth to front elevation & selected elevations. Two course brick dentil/soling detail, with facing brick & single course opline to first floor front elevation. Weatherboarding to first floor selected elevations & garage above brick plinth.
- Windows:**
Traditional 'light grey' pre-finished double glazed cottage bar casement windows. All Bathrooms, Shower Room & WC's to have obscured glazing.
- Double Doors:**
Double glazed doors / sliding folding doors.
- Front Doors:**
Oak finished vertically boarded with glazed light.
- Rainwater Goods:**
Black spout half round guttering with matching downpipes.



FRONT ELEVATION - North
PLOT 2



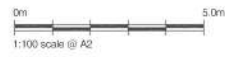
SIDE ELEVATION - East



REAR ELEVATION - South



SIDE ELEVATION - West





FRONT ELEVATION - East
PLOT 3



SIDE ELEVATION - North



REAR ELEVATION - West



SIDE ELEVATION - South

MATERIALS SCHEDULE

Roof:
Plain tile roofs, all roofs set at 40 degrees, Matching ridge & hip tiles. Lead cheeks to dormers. Painted support posts with stop end chamfered corners on brick plinths.

Walls:
Facing brickwork to ground floor with projecting plinth to front elevation & selected elevations. Two course brick string detail, with weatherboarding to first floor generally. Flint work to first floor gable above entrance. Feature stone detail to gable.

Projecting plinth to front & part side elevations, remaining elevations to have single red flash plinth course. Red cut brick soldier course below window sill.

Windows:
Traditional Light Grey pre-finished double glazed cottage bar casement windows. All Bathrooms, Shower Rooms & H.C.'s to have obscured glazing.

Double Doors:
Double glazed doors / sliding folding doors.

Front Doors:
Oak finished vertically boarded with glazed light.

Rainwater Goods:
Black spvc half round gutters with matching downpipes.



FRONT ELEVATION - North
PLOT 4



SIDE ELEVATION - West



REAR ELEVATION - South



SIDE ELEVATION - East

MATERIALS SCHEDULE

- Roof:**
Fish tile roofs, all roofs set at 40 degrees to house
35 degrees to garage. Matching ridge & hip tiles. Lead
sheets to dormers. Faked support posts with stop and
chattered corners on brick pilings.
- Walls:**
Facing brickwork to ground floor & part first floor with
projecting pilings to front elevation & selected elevations.
Heatherboarding to first floor generally.
Single brick quoins to front elevation, remaining elevations
to have single red fish pith course. Red cut brick
soldier course below window sill.
- Windows:**
Traditional 'Light Grey' pre-finished double glazed
collage bar casement windows. All Bathrooms, Shower
Rooms & P.C.'s to have obscured glazing.
- Double Doors:**
Double glazed doors / sliding folding doors.
- Front Doors:**
Oak finished vertically boarded with glazed light.
- Rainwater Goods:**
Black upvc half round guttering with matching downpipes.