



*Original Illustration by Chris Embleton-Hall*

# Wild Card Auction

10 July 2019  
CATALOGUE



# Contents

|                     |             |
|---------------------|-------------|
| Welcome             | Page 3      |
| Renaissance Project | Pages 4     |
| About the Auction   | Page 5      |
| Auction Lots 1-42   | Pages 6-47  |
| About the Raffle    | Page 48     |
| Raffle Prizes       | Pages 49-55 |

# Welcome

George Abbot School has a longstanding reputation for excellence in the arts and a firm belief in the power and value of creativity. However, it is time to upgrade the arts spaces in school to ensure that they continue to reflect the talent of the students and the passion of the staff team.

By investing in creativity, the school is confident that students will reap the benefits. The arts can play a key role in developing critical thinking and problem solving as well as encouraging risk taking and creating a sense of well-being. It also helps develop social skills – and there is evidence that creativity helps develop skills in maths and science.



*'We have been overwhelmed by the generosity of the arts community in contributing their original work to our Wild Card auction. Every penny raised will go towards updating our arts facilities and creating a set of inspiring, sustainable and accessible spaces to house our outstanding arts activity. Thank you for supporting our event.'*

Mrs Kate Carriett, Headteacher

# Renaissance Project

## The Renaissance Project

*Upgrading the arts facilities at George Abbot School*

- Creating a set of modern, sustainable and accessible spaces for our outstanding arts activity and providing a worthy reflection of our talented student and staff team.
- Harnessing creativity to develop critical thinking; encourage risk taking; create a sense of well-being and develop social skills.

There is no shortage of talent – only inspirational spaces.

TARGET TO REACH  
£250,000

ceramics | fashion | fine art | photography | textiles

[#RenaissanceProject](#)

The Wild Card Auction will help us to create a hub for the arts in school...



*Existing facilities*



*Concept design for new facilities*

# About the Auction

We will be auctioning 42 lots of original, postcard sized, artwork on the evening of Wednesday 10 July. Proceedings will be run by Clarke Gammon Wellers auctioneers and all pieces are available to view on the evening.

If you are unable to attend then you can submit a proxy bid by email to Jane Friend ([jfriend@georgeabbot.surrey.sch.uk](mailto:jfriend@georgeabbot.surrey.sch.uk)) giving the following information:

- Full name
- Address
- Telephone number
- Lot number and name of artist
- Your highest bid

If you win the item following a proxy bid then you will be contacted the day after the auction to arrange payment and delivery.

On the evening, we are able to accept the following forms of payment:

- Cash
- Cheques (made payable to George Abbot School)
- Wisepay (for parents at George Abbot School only)
- By card or Paypal through our online funding platform [wonderful.org](http://wonderful.org)

If you make an unanticipated purchase, and do not have the means to pay on the evening, then do speak to a member of our team on the evening about arranging an invoice.

Lot **1** (two pieces)



**Ruth Barrett-Danes**

Ruth's early years, spent in Devon exploring the sinister and brooding Dartmoor and later the Welsh landscape, encouraged a love of nature and observation of all things wild and strange. Now living in Hampshire this landscape is providing new challenges and responses.

She has a lifelong fascination with Romanesque Art and this too has provided an endless source of inspiration for all her work. She is both a ceramist and printmaker and her prints reflect the development of a visual language that has been synthesised from past ceramic work translated into original prints using Collagraph and Drypoint techniques that create rich surface textures.

[printmakerscouncil.com/artist/ruth-barrett-danes](http://printmakerscouncil.com/artist/ruth-barrett-danes)



*'Eagle Eyed'*



*'First Steps'*

# Lot **2** (two pieces)



**Hannah Blackwood**

Hannah is an award-winning jewellery designer and maker. Who was a student at George Abbot 10 years ago and then went on to get a first class degree in Silversmithing, Goldsmithing and Jewellery from UCA Rochester.

Nature is a major source of inspiration for Hannah and translates into her jewellery. Hannah finds botanical drawings inspirational and loves the stylisation.

'Tulips' and 'Iris' were inspired by Victorian botanical drawings (and Pop Art) and were created using ink pen and colour pencil. 'Iris' was inspired by Victorian botanical drawings and Pop Art.

[hannahblackwoodjewellery.co.uk](http://hannahblackwoodjewellery.co.uk)



*'Tulips'*



*'Iris'*



# Lot 3



**Tiffany Budd**

Tiffany is inspired by everything around her: be it colours, textures or views. She reinterprets images in her own way, recording them in her sketchbook and then getting it down onto canvas. There are times when she doesn't know what she is going to paint until she hits the blank canvas!

She is particularly interested in Cubism and Futurism and is fascinated by the way these movements interpret space and objects. She loves colour, shape and movements and fish are of real interest to her. She loves to watch them move and glide about in the water, and tries to recreate this in her work.

[tiffanybudd.co.uk](http://tiffanybudd.co.uk)



*'The Four Fishes'*



# Lot 4

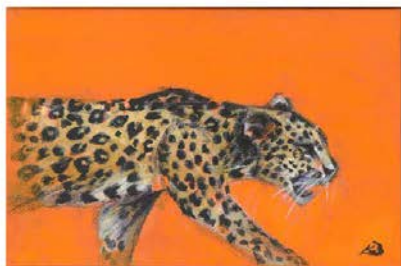


**Karen Burling**

Karen is an award-winning artist who is passionate about wildlife and the energy of the great outdoors. Inspired from a young age and later working with British wildlife at Wildlife Aid, her fire was fuelled with her trips around Africa. Karen is captivated by the beauty and spirit of the world's diverse wild creatures and their environments, observing behaviours and the challenges these resilient souls face.

Karen works from her studio in Church Crookham in the medium of acrylic, loving the use of vibrant colours in her work. She will lose hours creating her unique style, which she hopes inspires her audience in a way that she has been for many years.

[karenburlingart.co.uk](http://karenburlingart.co.uk)



*'Prowl'*

Lot **5**



**Peter Cattermole**

Peter has been painting and drawing for many years and took up watercolour painting seriously after he retired. Joining the Banstead Art Group recently has motivated him to produce a whole series of new work.

Starting with traditional landscapes, he then moved on to portraits and people and has been experimenting with a much looser brush style in recent months. The water-colourists who have inspired him include Joe Francis Dowden, Geoff Kersey and Joseph Zbukvic.

[bansteadartgroup.com](http://bansteadartgroup.com)



*'Untitled'*

# Lot 6



**Peter Clarke**

Peter took up painting seriously on retirement, and trained at the Lydgate Art Research Centre under Robin Child. As an Exhibiting Member of Farnham Art Society, he won The James Hockey Award for painting; The Joe Acheson Award for watercolour and gouache; and The James Hockey Award for drawing.

He has exhibited at the Llewellyn Alexander and Mall Galleries in London and with the Armed Forces Art Society with several pieces of work 'Highly Commended'. In 2009 he won an Open Exhibition at Cranleigh Arts Centre and was awarded a solo exhibition at their Gallery followed by an acclaimed solo exhibition at Otters Pool Studio Gallery, Guildford. His work, also represented in several private collections, is influenced by Turner, and by studies of the great 20th Century Masters.



*'Untitled'*

# Lot 7



**Kim Cody**

Born and educated in the south of England, Kim has drawn and painted all her life. She was a teacher of art and design for 35 years before moving to Brittany for 12 years.

Her work is essentially about the natural environment but her interpretation is emotional rather than pictorial and her interest lies in studying and recording small corners of the landscape where colours, shadows and light are constantly shifting. In many of her paintings drawn lines disappear and reappear hinting at the underlying structure of the composition. Kim exhibits regularly in France and the UK and her work is in collections worldwide. She now lives and works in Farnham.

[kimcody.com](http://kimcody.com)



*'Red Focus'*

# Lot 8



**Louise Collins**

Louise has loved creating art since childhood – her earliest inspiration was her art teacher (thank you Mrs Smale!).

She has been working in education for 15 years and is currently based in Wimbledon where she enjoys using her creative skills to create props, costumes and backdrops for school productions.

She now takes portrait commissions and generally works in her preferred medium of acrylic paints.

[bansteadartgroup.com](http://bansteadartgroup.com)



*'Portrait'*

# Lot 9



**Andrew Curtis**

Whilst primarily an abstract painter, Andrew had a rigorous conventional art training at the Ruskin School, Oxford University. Drawing what he sees is a significant part of his practice whether it be animals viewed on safari, local views and, local musicians performing in pubs, clubs and at festivals.

He has exhibited with the New English Art Club, Royal Society of British Artists, Royal Institute of Oil Painters (winner of the 2002 Winsor and Newton Award), the Royal West of England Academy as well as many galleries in the UK. He has written for the Artist magazine and appeared on BBC2 The Culture Show.

He has been Head of Art at the Royal Grammar School since 1993.

[andrewcurtis.com](http://andrewcurtis.com)



*'Proof'*

# Lot 10



**David Dragon**

David began his career in the late 60s as a designer/illustrator in the music industry designing album covers at Decca Records and EMI, and completing projects for artists as diverse as Cliff Richard and Oasis. In 1981 he went freelance and began working with designer, Ken Ansell which led to the formation of London design agency, Clinic, with clients including Virgin, Barclays, BBC and ITV.

In 2007 David retired, swapping his role of creative director for that of painter, printmaker, photographer and chronicler of his travels. Much of his work continues to draw inspiration from popular culture, notably music, film and fiction. He occasionally returns to his roots and teams up with Ken to work on an album cover.

[thedragonboys.com](http://thedragonboys.com)



*'Wish You Were Here (Parking Lot, Arizona)'*



# Lot 11



**Emma Dunbar**

Emma graduated with a degree in Fine Art Printmaking from West Surrey College of Art and Design. Her paintings have been internationally reproduced as greetings cards, posters, limited edition etchings and even fabric designs. Her influences come from travelling in India, Cornish holidays and the chaos of cats and children wandering onto wet paint. What excites Emma about making pictures is capturing the essence of a place, or a thing. She is not worried about visual accuracy but is attracted to vivid colours and the decorative qualities in everyday objects. Her training as a printmaker is evident in her use of blocks of flat colour and the way she scratches through surfaces to reveal pre-laid colours underneath.

[emmadunbar.co.uk](http://emmadunbar.co.uk)



*'Bright Posy'*

Lot **12**



**Chris Embleton-Hall**

Chris attended George Abbot School in the 1990s and has many fond memories of his time here. His favourite subjects were art and graphic design and teachers included Mr Barter and Mr Ellerby for Art and Mrs Caple and Mr Davies for Graphics. He then went on to Surrey Institute of Art and Design in Farnham and onto University in Hull, achieving a degree in illustration. He has been freelance since 2000 illustrating children's books with clients including Oxford University Press and Ladybird. He has based his artwork on Guildford and its locations and associations: 'It reminds me of a competition I entered to design a Guildford Board Game whilst at George Abbot. I remember receiving a prize in assembly and being over the moon'.

[chrisembleton-hall.co.uk](http://chrisembleton-hall.co.uk)



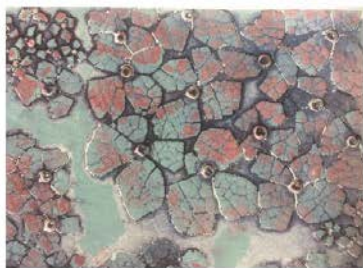
*'Guildford'*

# Lot 13

Vanessa **Gellett**

Vanessa is the parent of two students at George Abbot School and a part-time printmaker. She is a key-holder printmaker at Ochre Print Studio.

The piece she has created is a unique print made from a single plate collagraph with viscosity inking. The plate was constructed entirely using broken eggshells, glue and card and then inked up using three different coloured inks, before being put through a press once. The inks each contained different amounts of oil so that when the plate was put through the press, the 'runnier' inks repelled the less runny ones, causing the colours to stay separate in some areas and merge in others.



*'Lilac Hydrangeas for George Abbot School'*

# Lot 14

(two pieces)



**Sue Hinton**

Sue is an amateur artist who spends as much of her spare time as possible in the studio. As well as creating paintings she particularly likes creating illusions in the form of murals. She has had no formal training. She first picked up a paintbrush in earnest 30 years after leaving full time education. She then spent an inspiring week in Cornwall with artist Janet Shearer, who shared her extensive knowledge including mural painting and perspective.

Since then she has gone on to paint a wide variety of subjects, all in acrylics, and now undertakes commissions. She is currently Chair of Woking Art Society.

[wokingartsociety.org](http://wokingartsociety.org)



*'Tree on the Moor'*



*'Tree Peony'*

Lot **15**

(two pieces)

**Michael Jacobs**

Michael is 86 years old and has been married for 60 years. He lives in Surrey but grew up in Bristol and was educated at Chipping Sodbury Grammar School. After working for the NatWest Bank for one year, he joined the RAF in 1951 and served as a wireless operator in Iraq.

He then worked in industry, including as Sales Manager for a company manufacturing safety valves before retiring aged 60. Painting and drawing became Michael's hobby during retirement and he has grown to enjoy it hugely.

[bansteadartgroup.com](http://bansteadartgroup.com)

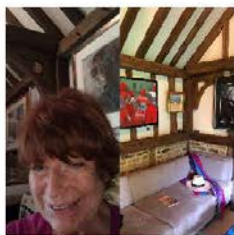


'Untitled #1'



'Untitled #2'

# Lot 16



**Sue Jelley**

Sue is a Director of the Society of Women Artists (and was their President from 2012-17) and is a member of the Société des Pastellistes de France and the Worshipful Company of Painter Stainers. She studied under James Hockey from 1984-87 and went on to study/work in London and Paris with Portraitist Ken Paine. Much of her work is inspired by the body language of her models especially musicians and dancers and she likes to create an atmosphere of passion and movement in all her works. It was her visits to 'Le Petit Journal' in Paris and the famous Jazz venues of New Orleans that spawned a lifelong love of Jazz and its many interesting characters. Sue's paintings are in private and public collections in the UK and internationally.

[suejelley.co.uk](http://suejelley.co.uk)



'Sisters'



Lot **17**



**Sandy Kendall**

As an artist, Sandy has a particular passion for capturing the effects of light and shade on the landscape and the restless motion of the sea. She also enjoys still-life, flowers and the occasional portrait. Having attended art school and gained a diploma in art and design, Sandy took time out to have her three sons. Once they were all at school she started teaching at a school in Woking whilst continuing with her own work as a painter.

Now she has retired from teaching, she now runs art classes for children from her home studio, helping them to explore and interpret the world around them through their art.

[sandystudio.co.uk](http://sandystudio.co.uk)



**'Toe Head'**



# Lot 18



**Rosalinda Kightley**

Ros has been illustrating children's picture books for over 30 years for publishers including Walker Books, Scholastic, Random House and Boxer Books. After a degree in graphic design at Kingston Polytechnic, she worked as a book designer at Walker, leaving to work freelance as a children's book illustrator. Nowadays she mostly paints and draws animal characters in various media.

She feels very lucky to live near the Downs and woods on the edge of Guildford and finds walks in the green very inspiring. Her agent sources her work throughout the world although she is also having fun working on some of her own projects alongside the commissions.

[rozkightley.wixsite.com](http://rozkightley.wixsite.com)



'Different Ways of Looking'

# Lot 19



**Fiona Millais**

Fiona takes inspiration from the places and objects that she loves. She walks every day and gathers additional materials, with stones, leaves or feathers becoming visual reminders of her experience.

She loves the connection between the natural rhythms of the land and how it reflects our presence or the lack of it. The way that landscapes are shaped by ourselves and our ancestors, leaving marks and echoes through time. Fiona's canvasses are often painted and repainted so that traces of the original images remain present, creating layers of marks, colour and interwoven history. She studied Fine Art at Newcastle and her great-grandfather was the Pre-Raphaelite painter, Sir John Everett Millais.

[fionamillais.com](http://fionamillais.com)



'Untitled'

# Lot 20



**Alison Orchard**

Alison's recent paintings have been concerned with studying changing landscapes: the sketched lines on the sand, cloud movements, the tidal shift. She paints and sketches direct from the landscape, using these to inspire the larger gestural paintings. Alison was taught by the late Paul Barter at George Abbot School, who passed onto her his enthusiasm for sketchbooks. She went on to study at St. Ives School of Art, Epsom School of Art and Design and Harrow College, University of Westminster. She worked as a commercial illustrator and designer, before launching her fine art career. She is accredited as a Golden Artist Educator and is listed in Who's Who. Her work has a growing following and has been shown in galleries around the world.

[alisonorchard.com](http://alisonorchard.com)



'Thornton Marshes'

# Lot 21



**Brenda Ord**

Brenda is a hobby artist who enjoys working and experimenting with a range of mediums and loves to encourage others to do the same.

She sells her work at local exhibitions and each year creates greetings cards to support a different charity.

Her work lends itself to small scale and she has created a postcard print size of her lino cut of Marlow Swans.



**'A Swankiness of Swans'**

# Lot 22



**Sue Ransley**

Sue paints pictures of everyday folk, taking a lighter look at life and capturing our warmth and humanity. She aims to evoke a sense of the familiar – hoping that you will recognise something in the image - like a reflection of someone you know.

The majority of her work is in oil, with occasional forays into watercolour and mixed media. Her focus is on the essence of the image, rather than the finer detail.

All the moments captured are of people Sue has seen for herself either on home turf, or further afield on her travels.

[sueransley.com](http://sueransley.com)



**'One Scoop or Two'**

# Lot 23

(two pieces)

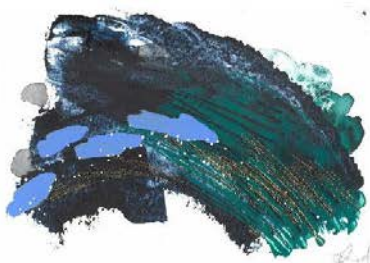


**Emma Read**

Emma is co-creator of Cedar's Yard which was set up by real life partners and design duo Emma and Dan. Named after their son, Cedar, it was born out of a love of colour, pattern, nature and uniqueness.

Emma has always had a love for bold colour and pattern. She studied textile design at Loughborough University and now is a full time mum and joint owner of this new up and coming brand. From unique pet portraits, art wall murals, paintings to jewellery and textiles Emma intends to take on the sea of beige and help fill it with colour. Often inspired by the sea, her latest collection came from the sea and cliffs of Watergate Bay Cornwall.

[cedarsyard.co.uk](http://cedarsyard.co.uk)



'Mini Splash Series #1'



'Mini Splash Series #2'



# Lot 24



**Maggie Read**

Maggie trained at UCA, specialising in Illustration. She worked as a freelancer for many years, illustrating children's books. After marriage and children, she trained as a Tutor teaching drawing, watercolour and portrait classes for many years and later running private courses from her studio. She then opened, and continues to run, Pirbright Art Club which now has four groups and almost 100 members. She teaches weekly painting classes; runs outdoor painting days in the summer and organises painting holidays in Cornwall and France. Her paintings combine elements of figurative drawing with impressionistic paint techniques and use mixed media to create interesting effects.

[maggieread.co.uk](http://maggieread.co.uk)



'Untitled'



Lot **25**



**Georgina Rey**

Georgina studied Interior Design at Chelsea Art College and practised for several years. When she went to Mauritius in 1988 she joined an art class and a plein air painting group since when she has been selected for numerous solo and joint exhibitions.

She likes to paint outdoors in quiet remote, wild, natural places, with no buildings or people, taking her pochade or cigar box and tripod in her back pack. Georgina likes colour, composition and brush strokes and tends to spend a long time in one place (anything up to 9 months) doing numerous sketches. She likes to be alone when she paints...

[georgierey.com](http://georgierey.com)



**'Ilot Vacas'**

Lot **26**



**Philip Ryland**

Philip was born in Warwickshire in 1971 and studied sculpture at Staffordshire University. Since then he has concentrated on painting but still uses the drawing techniques he employed as a sculptor to produce detailed works. He has sold work through several galleries; exhibited at major art fairs around the world and worked on many large corporate and private commissions.

Philip's work is autobiographical; evoking events, people and places from the everyday and his past. He is constantly developing his process, working digitally and in sketchbooks before moving to canvas, building up layer after layer of paint to create detailed and complicated abstract arrangements. Philip lives and works in Farnham, Surrey.

[philipryland.com](http://philipryland.com)



'Untitled'

Lot **27**



**Jessica Saraga**

Jessica is a painter and print-maker, based in Surrey. She draws and paints in oil, watercolour, ink and charcoal and enjoys mixing these media, often incorporating print-making as well. Her subjects are figure, portrait and especially landscape and she best likes working outdoors.

She trained over a number of years in short courses at Wimbledon College of Art, the City Lit, and other adult colleges, combining artistic practice with a career in education and government. Now she balances outside and studio work with occasional lecturing on art history to art societies and adult groups, including at the two London Tate Galleries, where she is also a Tour Guide.

[jessicasaraga.wordpress.com](http://jessicasaraga.wordpress.com)



'Untitled'

Lot **28**

(five pieces)



**Alison Saunders**

Alison came late to making art her fulltime career. Her parents were both fantastic artists, so she turned to accountancy instead. When her husband's job took her to the USA, she was able to explore her abilities out of their view and art quickly became her passion. Alison's work is primarily in printmaking and painting using each to inform the other. She enjoys producing works in multiple layers and often uses resin between layers.

The series of postcards made for the George Abbot school fundraiser, are multi-layered mono prints of daisies, but no two are the same.

[alisongsaunders.art](http://alisongsaunders.art)



*'Mono Prints 1-5'*



# Lot 29



**Edwin Schofield**

Edwin graduated from UCA in 2010 with a degree in fine art. After appearing in several group shows and working in various sculpture parks, he set up Yazaroo, an independent marketing and brand design agency based in Hampshire.

His work taps into both an alternative existence, and an inherent sense of struggle between the traditions of painting, and contemporary narrative motifs. The challenging and sometimes macabre aesthetic questions our own conscious behaviour within the human experience, demonstrating an irrational apathy toward the pointlessness of existence.

[yazaroo.co.uk](http://yazaroo.co.uk)



'Untitled'

Lot **30**

(five pieces)

Jill Scott

Jill is self-taught. She has painted for her own pleasure 'since forever'. She loves colour, texture and all mediums.



*'Untitled 1-5'*





Lot **31**

(two pieces)



**Christopher Sercombe**

Christopher studied fine art at Canterbury Christ Church University as a mature student and graduated in 2003 with a first class honours degree. He also completed a Masters degree in painting. Since then he has exhibited regularly in local exhibitions and galleries, and has taken part in the Surrey Artist Open Studios for the last three years.

Christopher has donated two pieces painted in oils from direct observation -no photographs are used. They are painted 'alla prima' with painting knives.

[chrissercombe.com](http://chrissercombe.com)



*'Untitled #1'*



*'Untitled #2'*

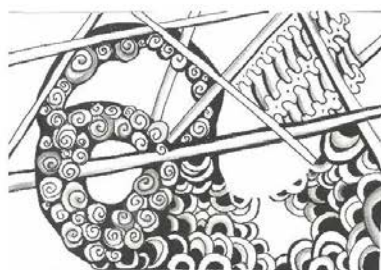


Lot **32**

**Dodie Shariff**

Dodie paints for hours and hours every week. She was educated in Hong Kong at King George V school and, while she was there, she studied Chinese Brush painting, with Mrs Li. Most of her paintings are in mixed media or watercolour and she also prints using a silk screen. Her favourite subjects are flowers, landscapes and seascapes.

She has tried a new technique for this artwork called Zen Tangle, which was created by a Zen Buddhist monk. Each pattern has a specific name with six variations which can be drawn randomly.



*'Untitled'*

Lot **33**

(two pieces)



**Denise Slattery**

Denise is a local artist with a Degree in Fine Art and a long career as a Scenic Artist. She trained in the theatre and moved into television working for the BBC. Since leaving the BBC she has continued to work in television as well as in film and theatre as a self-employed artist. She is an Associate Teacher at Guildford School of Acting, at the University of Surrey and also teaches art from her studio at home.

She has always enjoyed drawing and painting for pleasure and works in a variety of media and different subject matter, but particularly likes working directly from life. She sketches every day.



*'Untitled'*



*'Untitled'*

Lot **34**

(four pieces)



**Shirley Slocock**

Studying botanical illustration at the Chelsea Physic Garden provided the perfect opportunity to bring together Shirley's lifelong love of plants and art. The world of botanical painting was opened up and has allowed her to exhibit successfully in Australia and USA. She has also exhibited widely in the UK, was awarded a prestigious gold medal at the Royal Horticultural Society's annual London exhibition in 2017, is a member of the Royal Botanic Gardens Florilegium, Sydney, Woking Art Society and a Fellow of Hampton Court Palace Florilegium Society. She paints generally in watercolour but also uses graphite, both individually and in conjunction with watercolour.

[amicusbotanicus.com/shirley\\_slocock.html](http://amicusbotanicus.com/shirley_slocock.html)



*'Seaweed #1-4'*

Lot **35**

**Martin Southwood**

Martin Southwood has been painting for a little over two years. He works primarily in acrylics, but also watercolour and coloured pencil. His work has already developed from small scale pieces on board and paper to large paintings on canvas. Martin works from his experience of nature and writes: 'Nature connects all of us and my work is about expressing that connection. In these days of climate breakdown, all of us would do well to reflect on the beauty that we have diminished.'

Martin also values the therapeutic value of play and is exploring partnerships that might bring playful and interactive art back into the community.

[martinsouthwood.com](http://martinsouthwood.com)



*'Sark Sea Mist'*

Lot **36**



**Valerie Thorpe**

Valerie trained in Graphic Design in the 70s, working in London studios before having a family. She continued to paint and draw, developing her interests in botanical illustration and print making. She then moved into education and taught Art, Design and Photography until her retirement.

She works in watercolour, acrylic or a mixture of media depending on how the piece develops. Her objectives lie in showing the pattern, colour and texture of my chosen subject, whether landscape, animal or botanical. She loves contrast, texture and strong light effects and has been influenced by many artists including Cezanne, Bonnard, Turner and the illustrations of Look and Learn magazines in the 60s!

[valerithorpe.co.uk](http://valerithorpe.co.uk)



*'Untitled'*

Lot **37**

**Barbara Walsham**

Barbara trained at Ealing and the Central School of Arts and Crafts (before it was Central St Martins). She has exhibited widely in the south of England including the Royal Academy, the Royal Watercolour Society and Mall Gallery in London.

She paints mostly in watercolour producing Landscapes and Seascapes and preferring to work 'on the spot' if possible. She enjoys the countryside and the great outdoors and the call of the birds, and the feelings of her surroundings help her in her work.

She finds Cornwall particularly magical and has spent year after year working around the Lizard and Lands' End.



*'Untitled'*



Lot **38**



**Pippa Ward**

Pippa's work relies on gathering, manipulating and arranging single use plastics. She looks at man's inevitable impact on nature by using found bags and bottle tops. She enjoys working on projects that simultaneously attract and repel - carrier bags which were once created to attract and appeal soon became unwanted and repellent; and then in an artwork they are given a chance to help us question their existence.

This theme can be found running through most of her work: 'Once an object is no longer treated in terms of its use-value, the 'thingness' of an item intensifies and this is when I become interested in it.' This piece has been made from fused plastic carrier bags.

[pippaward.net](http://pippaward.net)



*'Untitled'*



Lot **39**



**Aasari Wickremage**

Aasari is a Sri Lankan-born self-taught artist, living in Surrey. With a background in architectural studies, she enjoys travelling and has lived in five countries. Her work draws inspiration from multiple cultures and highlights the experience of a landscape: its mood, character, lighting and density, through several layers of colour, lines, texture and brush strokes.

Once she feels that sufficient layers have been compiled, she picks out the details with lines that contribute to the overall composition and character, presenting her work in an abstract format for the viewer to solve.

[aasiri.com](http://aasiri.com)



*'Untitled'*

Lot **40**



**Marion Wilcocks**

Marion is an observational painter, sourcing people, places and objects to form compositions. Drawing comes first before she moves into watercolour or oils for more developed work. All her work is signed 'tid' – a family nickname from childhood. Originally training at Cardiff College of Art, she has also studied at the Sir John Cass School of Art, the Prince's Drawing Studio and the Slade summer school. Over twenty years' working life in the City gave me a close connection with Lloyd's of London, where she exhibits annually. She has shown successfully in local and London galleries and is an exhibiting member of the Society of Graphic Fine Art. She also works with societies in Surrey, giving occasional demonstrations and workshops.

[marionwilcocks.com](http://marionwilcocks.com)



*'Untitled'*

Lot **41**



**Elaine Winter**

---

Elaine combines working as an artist with a career in hairdressing. She has loved art since she was a small child and has a particular love of colour and texture in her work.

She belongs to Woking Art Society and Surrey Artist Open Studios and, despite having no formal training, has successfully exhibited locally and also works on commissions.

Her painting – in watercolour and copper foil – was inspired by a photograph taken at night.

[elainesartcave.co.uk](http://elainesartcave.co.uk)



*'The Life Giving Tree'*

Lot **42**



**Songül Yilmaz Meier**

Songül is fascinated by the power of light that shapes the landscape and also by the effects of time and weather on the Earth's surface – the forces of light, colour and atmosphere are the elements of nature which most inspire her. 'When people view my paintings I hope to make them feel that they have not only been to these places but have also shared my experience and memories of that day.' Her colourful palette and simple brushstrokes in both watercolour and oils, are the result of her academic art training in Turkey and her many years of painting and teaching in England. Most of her inspiration comes from her travels. She likes to capture strong light and reflections of the season and then the painting comes...

[songul-paintings.com](http://songul-paintings.com)



*'Sonoma Hills, CA'*

# About the Raffle

We have over 30 prizes donated to our Wild Card Art Raffle. We are asking for a minimum donation of £10 for a tickets and you could be in with a chance of going home with a beautiful piece of original art.

You can buy a ticket on the evening or donate here:

<https://wonderful.org/appeal/wildcard-453021ab> and we will purchase a ticket on your behalf on the night.

*Please see the following pages for a list of raffle prizes received to date. Here are a couple of highlights:*



*Sue Jelley is an internationally renowned artist who has donated this wonderful limited edition print.*



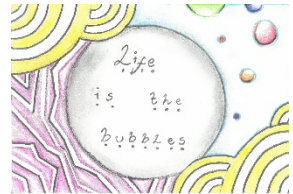
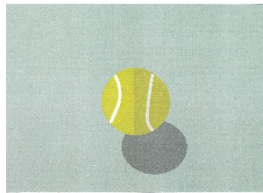
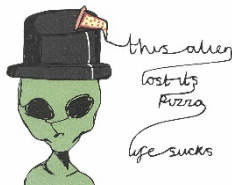
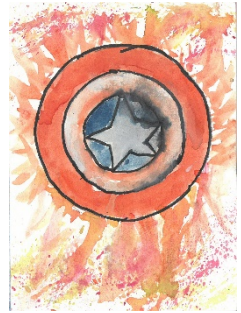
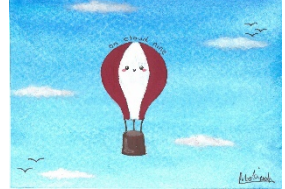
*Sunita Khedekar's paintings fetch up to £2,500. She has donated this stunning colourful and textured original artwork.*



# Students at George Abbot

---

A range of artwork produced by some of our talented students.





## Jenny Cadwallader

---

Jenny is an amateur artist who has been painting for over 70 years.



## Peter Cattermole

---

Peter has been painting and drawing for many years and took up watercolour painting seriously after he retired. Joining the Banstead Art Group recently has motivated him to produce a whole series of new work.

Starting with traditional landscapes, he then moved on to portraits and people and has been experimenting with a much looser brush style in recent months. The water-colourists who have inspired him include Joe Francis Dowden, Geoff Kersey and Joseph Zbukvic.



## Michael Jacobs

---

Michael is 86 years old and has been married for 60 years. He lives in Surrey but grew up in Bristol and was educated at Chipping Sodbury Grammar School. After working for the NatWest Bank for one year, he joined the RAF in 1951 and served as a wireless operator in Iraq.

He then worked in industry, including as Sales Manager for a company manufacturing safety valves before retiring aged 60. Painting and drawing became Michael's hobby during retirement and he has grown to enjoy it hugely.



## Sue Jelley

---

Sue is a Director of the Society of Women Artists (and was their President from 2012-17) and is a member of the Société des Pastellistes de France and the Worshipful Company of Painter Stainers. She studied under James Hockey from 1984-87 and went on to study/work in London and Paris with Portraitist Ken Paine. Much of her work is inspired by the body language of her models especially musicians and dancers and she likes to create an atmosphere of passion and movement in all her works. It was her visits to 'Le Petit Journal' in Paris and the famous Jazz venues of New Orleans that spawned a lifelong love of Jazz and its many interesting characters. Sue's paintings are in private and public collections in the U.K. and Internationally.



## Sunita Khedekar

---

Sunita was born and raised in a traditional Indian family in Mumbai. She graduated in Applied and Fine Arts from Asia's premier art school, Sir J.J Institute of Applied Art in Mumbai. After graduation she worked in an advertising agency as a visualiser and illustrator.

She relocated to the UK in 1999 where she began to focus on painting, inspired by the beautiful English landscape, the seasons and the symmetrical architectural style - combined with a nostalgia for India. Colour, shape or texture are enough to give her an idea for a painting...



## Janina Klein

---

Janina generally works in a mix of watercolour and acrylic inks. Most of her paintings contain elements of brush and pen work but sometimes you might spot the use of a wooden chopstick or a toothbrush! She is a member of Woking Art Society, Guildford Art Society and Pirbright Art Club.

She has also exhibited for the Royal Society of British Artists at the Mall Gallery, London and participates in the Surrey Artists' Open Studios. Her three sons attended George Abbot School.



## Ruth Mash

---



Ruth has been a member of Banstead Art Society for almost 20 years. She has always enjoyed drawing and painting as a means of self-expression and loves painting outdoors and playing with colour. Above all she wants to make people smile and want to have a go themselves!

## Alex McCarthy

---



Alex began his footballing career as a George Abbot schoolboy before joining Reading Football Club on a scholarship at 16. He is now plays as a goalkeeper for Premier League club Southampton.

## Karen Pearson

---



Karen is a well-established artist and art tutor. She practised as a Chartered Physiotherapist for many years before developing her artistic skills. Although primarily self-taught, she gained full distinction for an HND in Fine Art and completed a BA(Hons) degree in Fine Art Sculpture at Wimbledon College of Art.

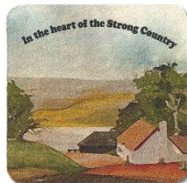
Karen is a guest tutor for Art Safari. She has also had work accepted for exhibition at the Threadneedle Prize Exhibition, at the Mall Galleries with The Society of Women Artists and at Westminster Central Hall with The Society of Botanical Artists.

## Amy Scott-Pillow

---

Amy is a Southampton based visual artist who creates habitable spaces from memory. She recreates objects in detail, creating tangible and functional objects. Her research uses a variety of sources including local archives, images and her own family photos.

She is interested in history and class culture. For the artist; originally from a council estate but relocated to a new-build middle class suburb in Surrey (where she attended George Abbot School) as a child, the work has provided a way to reconnect with her family. Connections that have been lost and separated by social class, distance and death.



## Denise Slattery

---

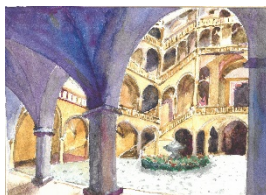
Denise is a local artist with a Degree in Fine Art and a long career as a Scenic Artist. She trained in the theatre and moved into television working for the BBC. Since leaving the BBC she has continued to work in television and in film and theatre as a freelance artist. She is an Associate Teacher at GSA and the University of Surrey and teaches from her studio. She has always enjoyed drawing and painting for pleasure and works in a variety of media and different subject matter, but particularly likes working directly from life. She sketches every day.



## Monika Weedon

---

Monika is a long standing member of the Banstead Art Group who have been great supporters of this auction. BAG was originally formed in 1947 by a group of enthusiastic painters who met in the 'Old Canteen' at one end of Banstead High Street. The group now meets once a month in the Mead Room of the Banstead Community Hall, and is run by an annually elected Committee. Their programme of activities includes demonstrations, talks, workshops, visits to art exhibitions, outdoor painting sessions and an annual painting holiday.



With many thanks to our contributing artists and supporters...



**HEADTEACHER • MRS K CARRIETT, BMus (Hons), MA, NPQH**

WOODRUFF AVENUE • GUILDFORD • GU1 1XX  
01483 888000 • [www.georgeabbot.surrey.sch.uk](http://www.georgeabbot.surrey.sch.uk)

