



**One Ward Street, Guildford, Surrey**  
**Price Guide £430,000 Leasehold**

CLARKE  GAMMON  
1919

APT 2 ONE WARD STREET  
GUILDFORD SURREY GU1 4LH

Price Guide £430,000



## THE PROPERTY

Type your text here



## THE GROUNDS

Type your text here

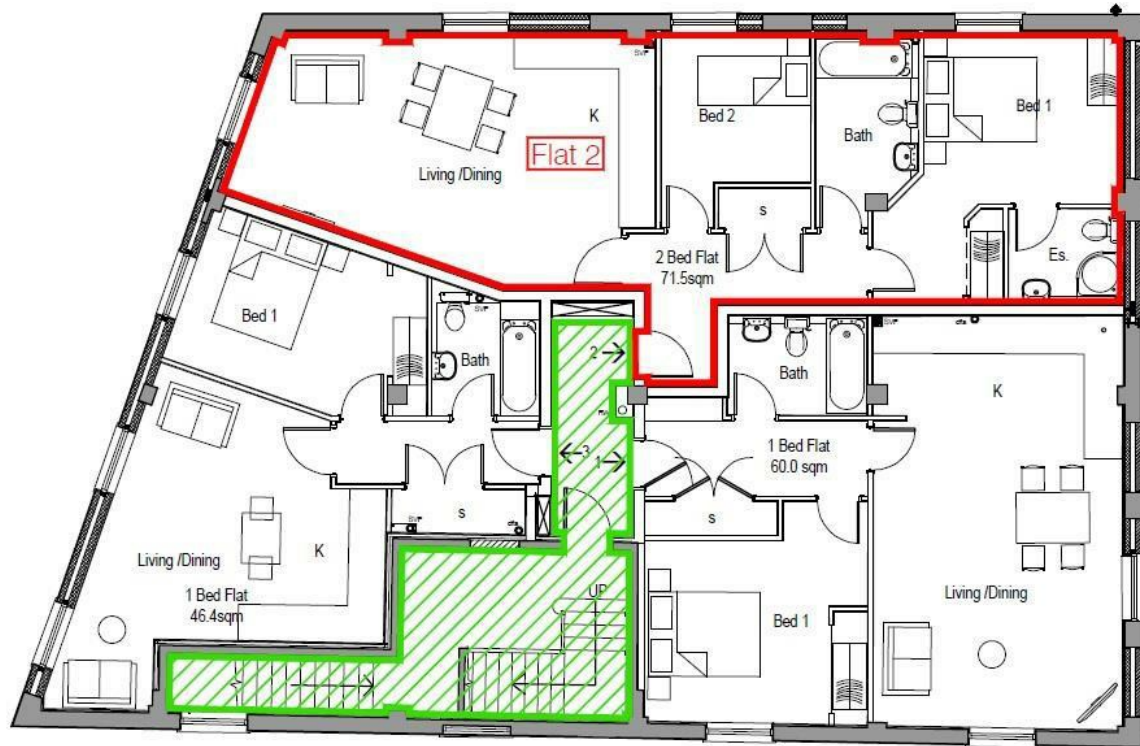
## SITUATION

GUILFORD | X miles  
LONDON WATERLOO | x MINUTES BY TRAIN

GODALMING | X miles  
LONDON WATERLOO | 47 MINUTES BY TRAIN

HASELMERE | 4 miles  
LONDON WATERLOO | 47 MINUTES BY TRAIN

CENTRAL LONDON | 30 miles



 Communal Areas

LOCAL AUTHORITY


COUNCIL TAX

Band

SERVICES

Mains water, electricity, mains drainage  
gas central heating

2nd November 2021

Energy Efficiency Rating		
	Current	Potential
Very energy efficient - lower running costs		
(92 plus) <b>A</b>		
(81-91) <b>B</b>		
(69-80) <b>C</b>		
(55-68) <b>D</b>		
(39-54) <b>E</b>		
(21-38) <b>F</b>		
(1-20) <b>G</b>		
Not energy efficient - higher running costs		
<b>England &amp; Wales</b>	EU Directive 2002/91/EC 	

**CG GUILDFORD OFFICE**

4 QUARRY STREET, GUILDFORD, SURREY, GU1 3TY

T: 01483 880900

E: guildford.sales@clarkegammon.co.uk

clarkegammon.co.uk

**DIRECTIONS**

**AGENT'S NOTE**

Whilst we endeavour to make our sales particulars accurate and reliable, we wish to inform prospective purchasers that we have not carried out a detailed survey, nor tested the services, appliances and specific fittings. If there is any point which you would like to have further clarification upon, please contact this office.

ESTATE AGENTS CHARTERED SURVEYORS VALUERS LETTINGS AUCTIONEERS

GUILDFORD OFFICE  
T: 01483 880 900

HASLEMERE OFFICE  
T: 01428 664 800

LIPHOOK OFFICE  
T: 01428 728 900

MAYFAIR OFFICE  
T: 0870 112 7099

AUCTION ROOMS  
T: 01483 223101

